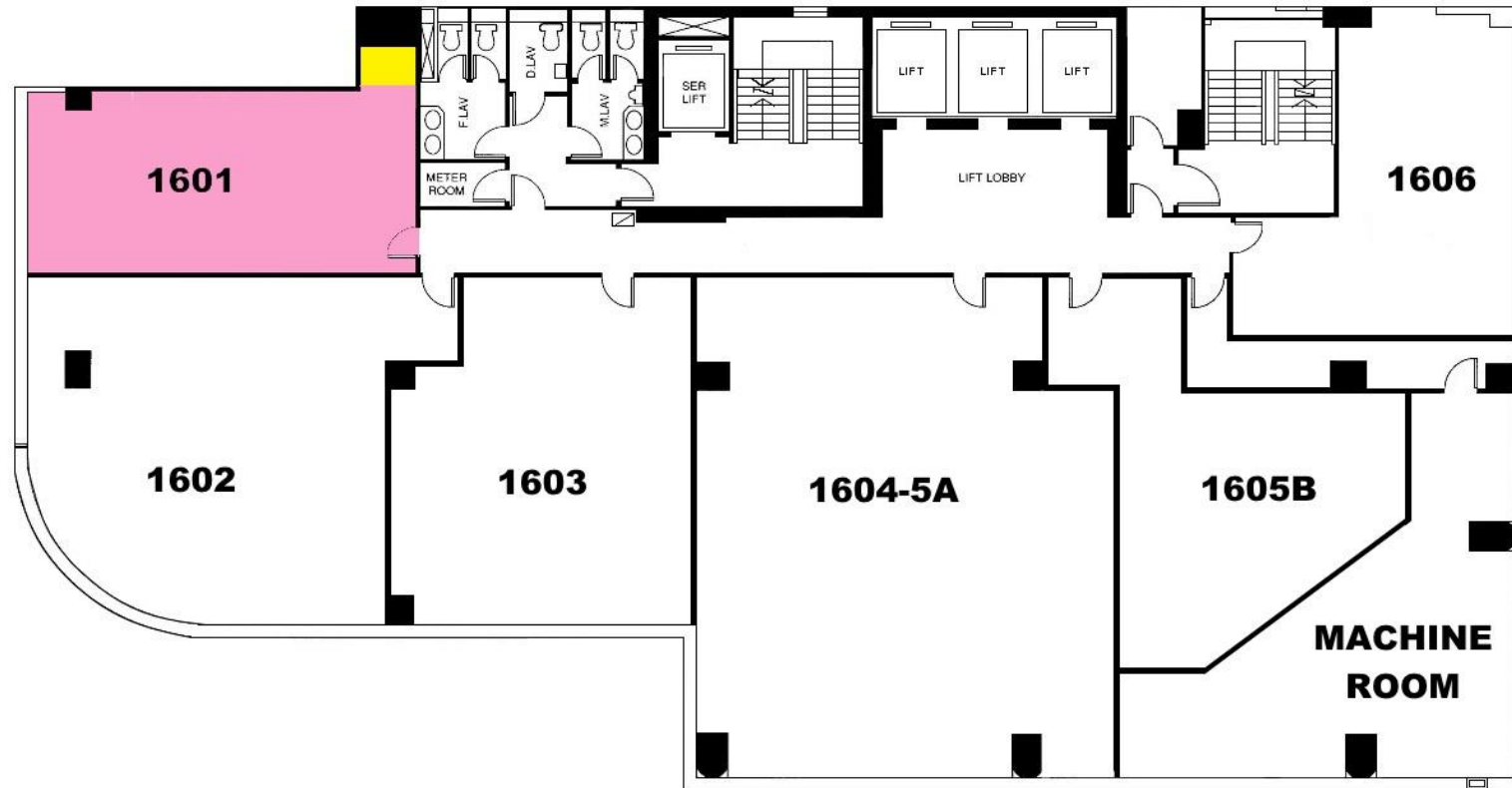


# CAUSEWAY BAY PLAZA 2

## 銅鑼灣廣場二期

面向維港海景  
Facing Harbour



面向波斯當街 Facing Percival Street

面向駱克道 Facing Lockhart Road

### 16th FLOOR PLAN

Not to scale, for identification purpose only

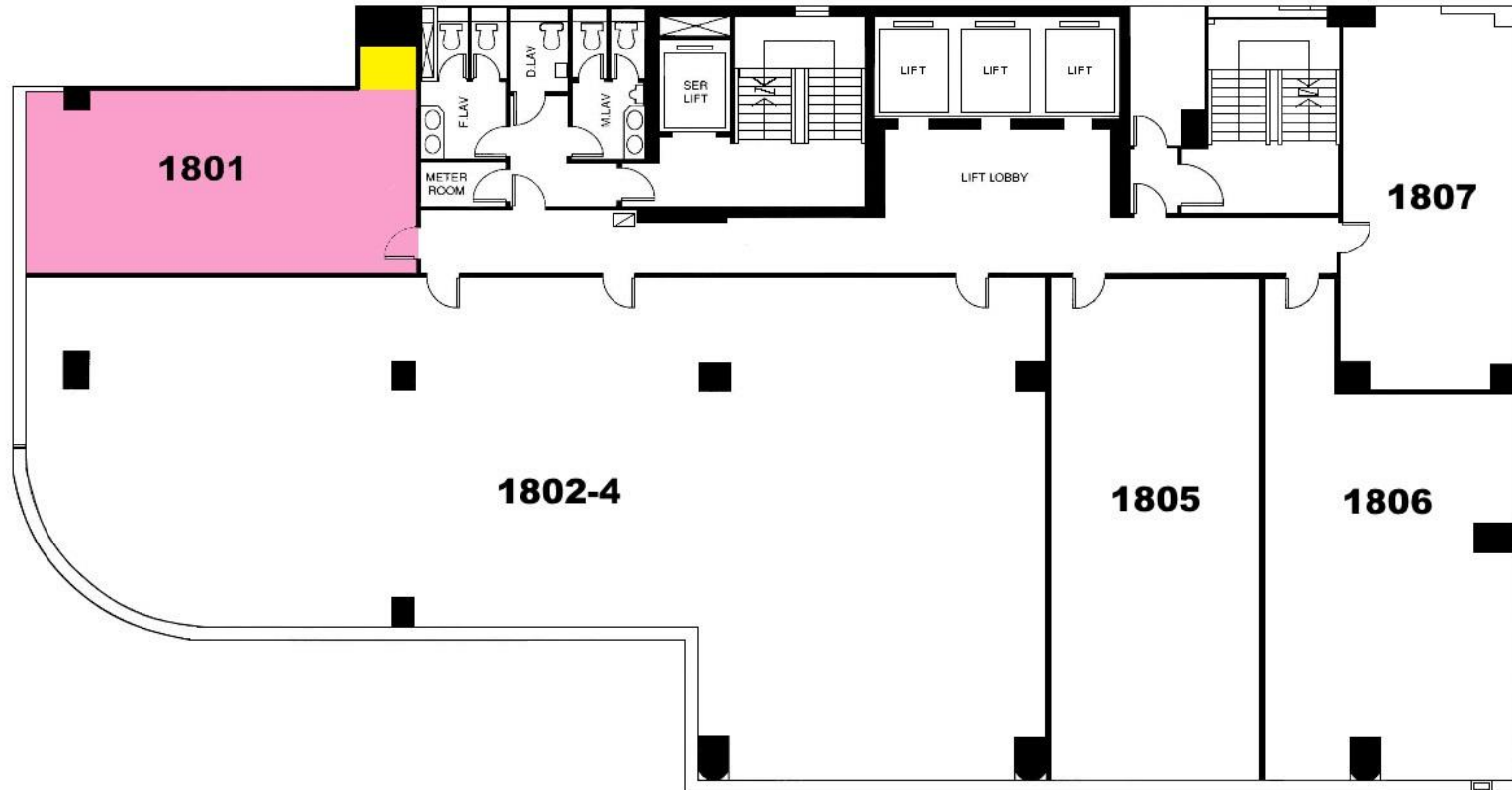
一切以合約為準 SUBJECT TO CONTRACT AND AVAILABILITY

**SUBJECT TO CONTRACT** : THIS DOCUMENT IS PREPARED BY THE LANDLORD FOR INFORMATION ONLY. WHILST REASONABLE CARE HAS BEEN EXERCISED IN PREPARING THIS DOCUMENT, IT IS SUBJECT TO CHANGE AND THESE PARTICULARS DO NOT CONSTITUTE PART OF AN OFFER OR CONTRACT; INTERESTED PARTIES SHOULD NOT RELY ON THE STATEMENTS OR REPRESENTATIONS OF FACT BUT MUST SATISFY THEMSELVES BY INSPECTION OR OTHERWISE AS TO THE ACCURACY. NO PERSON IN THE EMPLOYMENT OF THE LANDLORD OR THE LANDLORD'S PRINCIPAL HAS ANY AUTHORITY TO MAKE ANY REPRESENTATIONS OR WARRANTIES WHATSOEVER IN RELATION TO THESE PARTICULARS AND THE LANDLORD CANNOT BE HELD RESPONSIBLE FOR ANY LIABILITY WHATSOEVER FOR ANY LOSS HOWSOEVER ARISING FROM OR IN RELIANCE UPON THE WHOLE OR ANY PART OF THE CONTENTS OF THIS DOCUMENT.

# CAUSEWAY BAY PLAZA 2

## 銅鑼灣廣場二期

面向維港海景  
Facing Harbour



面向波斯富街 Facing Percival Street

面向駱克道 Facing Lockhart Road

### 18th FLOOR PLAN

Not to scale, for identification purpose only

一切以合約為準 SUBJECT TO CONTRACT AND AVAILABILITY

**SUBJECT TO CONTRACT** : THIS DOCUMENT IS PREPARED BY THE LANDLORD FOR INFORMATION ONLY. WHILST REASONABLE CARE HAS BEEN EXERCISED IN PREPARING THIS DOCUMENT, IT IS SUBJECT TO CHANGE AND THESE PARTICULARS DO NOT CONSTITUTE PART OF AN OFFER OR CONTRACT; INTERESTED PARTIES SHOULD NOT RELY ON THE STATEMENTS OR REPRESENTATIONS OF FACT BUT MUST SATISFY THEMSELVES BY INSPECTION OR OTHERWISE AS TO THE ACCURACY. NO PERSON IN THE EMPLOYMENT OF THE LANDLORD OR THE LANDLORD'S PRINCIPAL HAS ANY AUTHORITY TO MAKE ANY REPRESENTATIONS OR WARRANTIES WHATSOEVER IN RELATION TO THESE PARTICULARS AND THE LANDLORD CANNOT BE HELD RESPONSIBLE FOR ANY LIABILITY WHATSOEVER FOR ANY LOSS HOWSOEVER ARISING FROM OR IN RELIANCE UPON THE WHOLE OR ANY PART OF THE CONTENTS OF THIS DOCUMENT.

# CAUSEWAY BAY PLAZA 2

## 銅鑼灣廣場二期

面向維港海景  
Facing Harbour



面向波斯當街 Facing Percival Street

面向駱克道 Facing Lockhart Road

## 22nd FLOOR PLAN

Not to scale, for identification purpose only

一切以合約為準 SUBJECT TO CONTRACT AND AVAILABILITY

**SUBJECT TO CONTRACT** : THIS DOCUMENT IS PREPARED BY THE LANDLORD FOR INFORMATION ONLY. WHILST REASONABLE CARE HAS BEEN EXERCISED IN PREPARING THIS DOCUMENT, IT IS SUBJECT TO CHANGE AND THESE PARTICULARS DO NOT CONSTITUTE PART OF AN OFFER OR CONTRACT; INTERESTED PARTIES SHOULD NOT RELY ON THE STATEMENTS OR REPRESENTATIONS OF FACT BUT MUST SATISFY THEMSELVES BY INSPECTION OR OTHERWISE AS TO THE ACCURACY. NO PERSON IN THE EMPLOYMENT OF THE LANDLORD OR THE LANDLORD'S PRINCIPAL HAS ANY AUTHORITY TO MAKE ANY REPRESENTATIONS OR WARRANTIES WHATSOEVER IN RELATION TO THESE PARTICULARS AND THE LANDLORD CANNOT BE HELD RESPONSIBLE FOR ANY LIABILITY WHATSOEVER FOR ANY LOSS HOWSOEVER ARISING FROM OR IN RELIANCE UPON THE WHOLE OR ANY PART OF THE CONTENTS OF THIS DOCUMENT.

# CAUSEWAY BAY PLAZA 2

## 銅鑼灣廣場二期

面向維港海景  
Facing Harbour



面向波斯富街 Facing Percival Street

面向騎克道 Facing Lockhart Road

### 24<sup>th</sup> FLOOR PLAN

Not to scale, for identification purpose only

SUBJECT TO C/ SHOULD NOT RELY ON THE STATEMENTS OR REPRESENTATIONS OF FACT BUT MUST SATISFY THEMSELVES BY INSPECTION OR OTHERWISE AS TO THE ACCURACY. NO PERSON IN THE EMPLOYMENT OF THE LANDLORD OR THE LANDLORD'S PRINCIPAL HAS ANY AUTHORITY TO MAKE ANY REPRESENTATIONS OR WARRANTIES WHATSOEVER IN RELATION TO THESE PARTICULARS AND THE LANDLORD CANNOT BE HELD RESPONSIBLE FOR ANY LIABILITY WHATSOEVER FOR ANY LOSS HOWSOEVER ARISING FROM OR IN RELIANCE UPON THE WHOLE OR ANY PART OF TH

TRACT; INTERESTED PARTIES

Not to scale, for identification purpose only